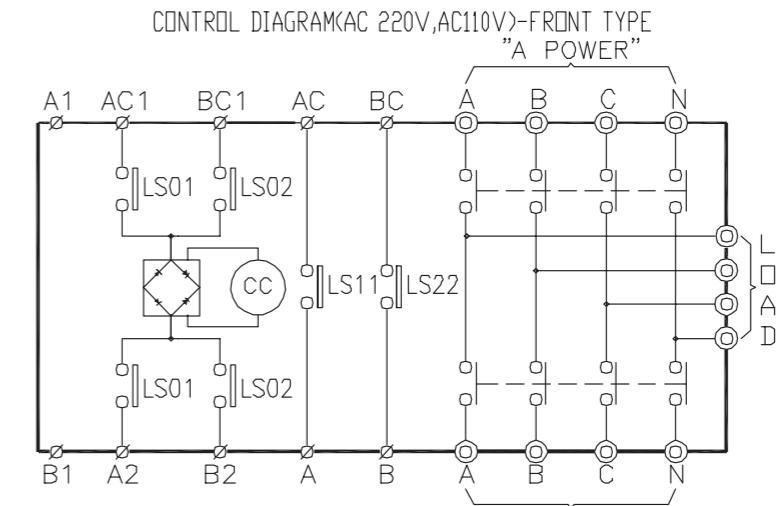


ATS-F Type 사양

ATS-F Type		01 F	02 F	03 F	04 F
정격전류 (A)		100A	200A	400A	600A
정격전압 (V)		AC 600V/DC 125V			
극수 (P)		3/4			
개극시간		0.06sec.			
절체시간		0.08sec.			
중 량( Max. Weight (3/4 poles Kg))		8.5kg		13kg	
돌입전류	AC100/110V	8A		15A	
	AC200/110V	5A		12A	
	DC100/110V	8A		15A	
단시간전류	Peak (kA)	12			
	rms (kA) / sec.	5			
성능	Mechanical Life	25,000 times			
	Switching Frequency	5,000 times/hour			
부속품	Auxiliary Switch	w/2C Capacity AC110V 5A, DC110V 5A			

AC POWER



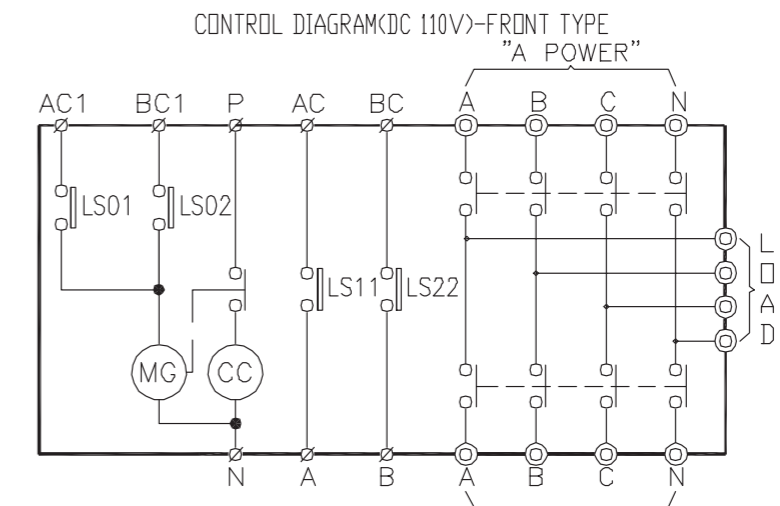
EXTERNAL T.B "B POWER"

A1	A2	B1	B2	AC1	BC1	AC	A	BC	B
----	----	----	----	-----	-----	----	---	----	---

Code Description

A1	A-Power Terminal (CONTROLLER USE ONLY)	B1	B-Power Terminal (CONTROLLER USE ONLY)
AC1,A2	A-Power Closing Terminal	BC1,B2	B-Power Closing Terminal
AC,A	A-Power Aux Switch	BC,B	B-Power Aux Switch
CC	Closing Coil	LS	Limit Switch

DC POWER



EXTERNAL T.B "B POWER"

AC1	BC1	P	N	AC	A	BC	B
-----	-----	---	---	----	---	----	---

Code Description

AC1	A-Power Closing Terminal	BC1	B-Power Closing Terminal
AC,A	A-Power Aux Switch	BC,B	B-Power Aux Switch
P,N	DC 110V Source	LS	Limit Switch
MG	Magnet	CC	Closing Coil